

## RACCORDI DI ESTREMITA' DIRITTI



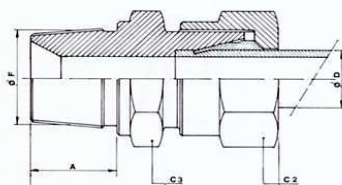
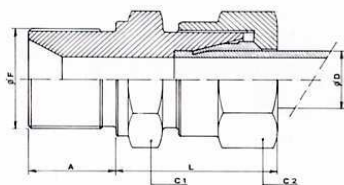
FILETTO Gas cilindrico UNI 338



FILETTO Gas conico DIN 3858



FILETTO Metrico Cilindrico UNI 4535



Serie	Diam. Tubo	Codice	Diam.F gas cilindrico	Codice	Diam.F metrico cilindrico	C2	L	A	C1	Codice	Diam.F gas conico R.Keg.	A	L	C3
L Leggera PN 250	6	A 06 L	1/8"	AM 06 L	M 10 X 1	14	23	8	14	AC 06 L	1/8"	10	32	12
	8	A 08 L	1/4"	AM 08 L	M 12 X 1,5	17	25	12	19	AC 08 L	1/4"	13	36	17
	8	A 08 L	3/8"			17	32	12	22	AC 08 L	3/8"	14	41	19
	10	A 10 L	1/4"	AM 10 L	M 14 X 1,5	19	29	12	19	AC 10 L	1/4"	13	37	17
	10	A 10 L	3/8"			19	30	12	22	AC 10 L	3/8"	14	42	19
	12	A 12 L	3/8"	AM 12 L	M 16 X 1,5	22	31	12	22	AC 12 L	3/8"	13	38	19
	12	A 12 L	1/4"			22	30	11	19	AC 12 L	1/2"	15	46	22
	12	A 12 L	1/2"	AM 12 L	M 22 X 1,5	22	33	14	27	AC 12 L	1/4"	13	40	19
	15	A 15 L	1/2"	AM 15 L	M 18 X 1,5	27	32	14	27	AC 15 L	1/2"	16	42	24
	15	A 15 L	3/4"			27	35	16	32	AC 15 L	3/8"	14	48	24
	15	A 15 L	3/8"			27	32	13	24					
PN 160	18	A 18 L	1/2"	AM 18 L	M 22 X 1,5	32	33	14	27	AC 18 L	1/2"	16	44	27
	18	A 18 L	3/4"			32	35	15	32					
	22	A 22 L	3/4"	AM 22 L	M 26 X 1,5	36	36	15	32	AC 22 L	3/4"	18	48	32
	22	A 22 L	1"	AM 22 L	M 22 X 1,5	36	38	18	41					
PN 100	28	A 28 L	1"	AM 28 L	M 33 X 2	41	40	18	41	AC 28 L	1"	20	51	41
	35	A 35 L	1"1/4"	AM 35 L	M 42 X 2	50	42	19	50	AC 35 L	1"1/4"	21	58	46
	42	A 42 L	1"1/2"	AM 42 L	M 48 X 2	60	43	19	55	AC 42 L	1"1/2"	22	61	55
S Pesante PN 640	6	A 06 S	1/4"	AM 06 S	M 12 X 1,5	17	30	12	17	AC 06 S	1/4"	13	41	17
	8	A 08 S	1/4"	AM 08 S	M 14 X 1,5	19	30	12	19	AC 08 S	1/4"	13	41	17
	10	A 10 S	3/8"	AM 10 S	M 16 X 1,5	22	33	12	22	AC 10 S	3/8"	13	42	19
	10	A 10 S	1/2"			22	33	14	27					
	12	A 12 S	3/8"	AM 12 S	M 18 X 1,5	24	33	12	24	AC 12 S	3/8"	13	44	22
	12	A 12 S	1/2"			24	33	14	27	AC 12 S	1/2"	14	47	22
	12	A 12 S	1/4"			24	32	13	22					
PN 400	14	A 14 S	1/2"	AM 14 S	M 20 X 1,5	27	36	14	27	AC 14 S	1/2"	16	50	24
	16	A 16 S	3/8"			30	34	13	27					
	16	A 16 S	1/2"	AM 16 S	M 22 X 1,5	30	35	14	27	AC 16 S	1/2"	16	50	27
	16	A 16 S	3/4"			30	36	15	32					
	20	A 20 S	3/4"	AM 20 S	M 27 X 2	36	40	16	32	AC 20 S	3/4"	18	57	32
	20	A 20 S	1/2"			36	42	14	32					
PN 250	25	A 25 S	1"	AM 25 S	M 33 X 2	46	45	18	41	AC 25 S	1"	20	64	41
	25	A 25 S	3/4"			46	44	16	36					
	30	A 30 S	1"1/4"	AM 30 S	M 42 X 2	50	48	20	50	AC 30 S	1"1/4"	21	68	46
	30	A 30 S	1"			50	51	20	46					
	38	A 38 S	1"1/2"	AM 38 S	M 48 X 2	60	55	20	55	AC 38 S	1"1/2"	22	76	55

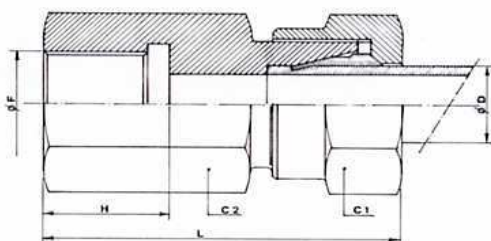
## RACCORDI DIRITTI CON ESTREMITA' FEMMINA



FILETTO Gas cilindrico UNI 338



FILETTO Metrico cilindrico UNI 4535



Serie	Diam. Tubo	C1	L	H	Codice	Diam. F	C2	Codice	Diam. F	C2
<b>Leggera PN 250</b>	6	14	30	8	T 06 L	R 1/8 G	14	TM 10 L	M 14 X 1,5	19
	8	17	34	12	T 08 L	R 1/4" G	19			
	10	19	35	12	T 10 L	R 1/4" G	19			
	10				T 10 L	R 3/8" G	22			
	12	22	36	12	T 12 L	R 3/8" G	22			
<b>PN 160</b>	15	27	39	14	T 15 L	R 1/2" G	27	TM 15 L	M 18 X1,5	24
	18	32	40	14	T 18 L	R 1/2" G	27	TM 18 L	M 22X1,5	27
<b>PN 100</b>	22	36	45	16	T 22 L	R 3/4" G	32			
	28	41	47	18	T 28 L	R 1" G	41			
<b>S Pesante PN 640</b>	35	50	54	20	T 35 L	R 1"1/4"	50			
	6	17	36	12	T 06 S	R 1"1/4"	19	TM 08 S	M 14X1,5	19
	8	19	36	12	T 08 S	R 1/4" G	19			
	10	22	38	12	T 10 S	R 3/8" G	24			
	12	24	38	12	T 12 S	R 3/8" G	24			
14	27	44	14	T 14 S	R 1/2" G	27				
<b>PN 400</b>	16	30	44	14	T 16 S	R 1/2" G	27	TM 16 S	M 22X1,5	30
	20	36	50	16	T 20 S	R 3/4" G	36			
	25	46	55	18	T 25 S	R 1" G	41			
<b>PN 250</b>	30	55	62	20	T 30 S	R 1"1/4"	50			