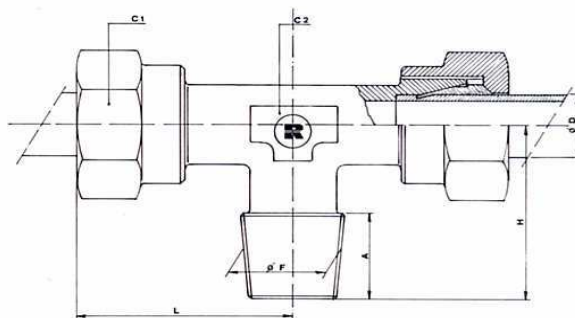


RACCORDI DI ESTREMITA' A "T"

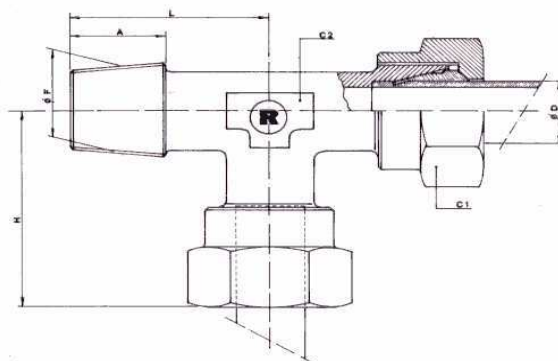
C FILETTO Gas conico e cilindrico



Serie	Diam. Tubo	C2	C1	L	H	A	Codice	Diametro F
L Leggera PN 250	6	12	14	27	20	8	C 06 L	R Keg. 1/8" Gc
	8	12	17	29	26	12	C 08 L	R Keg. 1/4" Gc
	10	14	19	30	27	12	C 10 L	R Keg. 1/4" Gc
	12	17	22	32	28	12	C 12 L	R Keg. 3/8" Gc
	15	19	27	36	32	12	C 15 L	R Keg. 1/2" Gc
PN 160	18	24	32	40	36	14	C 18 L	R Keg. 1/2" Gc
	22	27	36	44	26	16	C 22 L	R 3/4" G
PN 100	28	36	41	47	30	18	C 28 L	R 1" G
	35	41	50	56	34	20	C 35 L	R 1" 1/4"
	42	50	60	63	39	22	C 42 L	R 1" 1/2"
Pesante PN 640	6	12	17	31	26	12	C 06 S	R Keg. 1/4" Gc
	8	14	19	32	27	12	C 08 S	R Keg. 1/4" Gc
	10	17	22	34	32	14	C 10 S	R Keg. 1/2" Gc
	12	17	24	38	28	12	C 12 S	R Keg. 3/8" Gc
	14	19	27	40	34	14	C 14 S	R Keg. 1/2" Gc
PN 400	16	24	30	43	36	14	C 16 S	R Keg. 1/2" Gc
	20	27	36	48	26	16	C 20 S	R 3/4" G
	25	36	46	54	30	18	C 25 S	R 1" G
PN 250	30	41	50	62	34	20	C 30 S	R 1" 1/4" G
	38	50	60	72	39	22	C 38 S	R 1" 1/2" G

RACCORDI DI ESTREMITA' A "L"

D FILETTO Gas conico e cilindrico



Serie	Diam. Tubo	C2	C1	H	L	A	Codice	Diametro F	
L Leggera PN 250	6	12	14	27	20	8	D 06 L	R Keg.	1/8" Gc
	8	12	17	29	26	12	D 08 L	R Keg.	1/4" Gc
	10	14	19	30	27	12	D 10 L	R Keg.	1/4" Gc
	12	17	22	32	28	12	D 12 L	R Keg.	3/8" Gc
	15	19	27	36	32	12	D 15 L	R Keg.	1/2" Gc
PN 160	18	24	32	40	36	14	D 18 L	R Keg.	1/2" Gc
	22	27	36	44	26	16	D 22 L	R	3/4" G
PN 100	28	36	41	47	30	18	D 28 L	R	1" G
	35	41	50	56	34	20	D 35 L	R	1" 1/4"
	42	50	60	63	39	22	D 42 L	R	1" 1/2"
Pesante PN 640	6	12	17	31	26	12	D 06 S	R Keg.	1/4" Gc
	8	14	19	32	27	12	D 08 S	R Keg.	1/4" Gc
	10	17	22	34	28	12	D 10 S	R Keg.	3/8" Gc
	12	17	24	38	28	12	D 12 S	R Keg.	3/8" Gc
	14	19	27	40	34	14	D 14 S	R Keg.	1/2" Gc
PN 400	16	24	30	43	36	14	D 16 S	R Keg.	1/2" Gc
	20	27	36	48	26	16	D 20 S	R	3/4" G
	25	36	46	54	30	18	D 25 S	R	1" G
PN 250	30	41	50	62	34	20	D 30 S	R	1" 1/4" G
	38	50	60	72	39	22	D 38 S	R	1" 1/2" G