

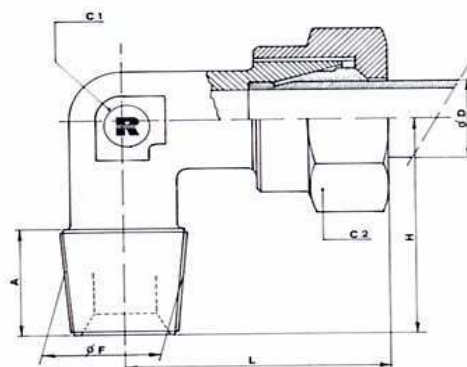
RACCORDI DI ESTREMITA' A GOMITO



FILETTO Gas conico



FILETTO Metrico conico

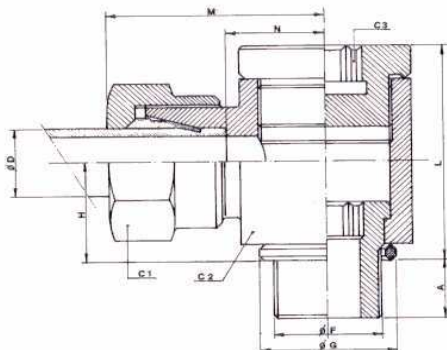


Serie	Diam. Tubo	C1	C2	L	H	A	Codice	Diametro F	Codice	Diametro F
Leggera PN 250	6	12	14	27	20	8	BC 06 L	R Keg. 1/8" Gc	BM 12 L	Keg. M 16X1,5 con
	8	12	17	29	26	12	BC 08 L	R Keg. 1/4" Gc		
	10	14	19	30	27	12	BC 10 L	R Keg. 1/4" Gc		
	10	17	22	32	27	12	BC 10 L	R Keg. 3/8" Gc		
	12	17	22	32	28	12	BC 12 L	R Keg. 3/8" Gc		
	12	19	22	32	32	12	BC 12 L	R Keg. 1/2" Gc		
	12	17	22	32	27	12	BC 12 L	R Keg. 1/4" Gc		
	15	19	27	36	32	12	BC 15 L	R Keg. 1/2" Gc		
	15	19	22	32	28	12	BC 15 L	R Keg. 3/8" Gc		
PN 160	18	24	32	40	35	14	BC 18 L	R Keg. 1/2" Gc		
	22	27	36	44	26	16	BC 22 L	R 3/4" G		
PN 100	28	36	41	47	30	18	BC 28 L	R 1" G		
	35	41	50	56	34	20	BC 35 L	R 1"1/4"		
	42	50	60	63	39	22	BC 42 L	R 1"1/2"		
S Pesante PN 640	6	12	17	31	26	12	BC 06 S	R Keg. 1/4" Gc	BM 12 S	Keg. M 18X1,5 con
	8	14	19	32	27	12	BC 08 S	R Keg. 1/4" Gc		
	10	17	22	34	28	12	BC 10 S	R Keg. 3/8" Gc		
	10	19	22	34	32	14	BC 10 S	R Keg. 1/2" Gc		
	12	17	24	38	28	12	BC 12 S	R Keg. 3/8" Gc		
	12	19	24	38	32	14	BC 12 S	R Keg. 1/2" Gc		
14	19	27	40	32	14	BC 14 S	R Keg. 1/2" Gc			
PN 400	16	24	30	43	32	14	BC 16 S	R Keg. 1/2" Gc		
	16	24	24	43	28	12	BC 16 S	R Keg. 3/8" Gc		
	20	27	36	48	26	16	BC 20 S	R 3/4" G		
	25	36	46	54	30	18	BC 25 S	R 1" G		
PN 250	30	41	50	62	34	20	BC 30 S	R 1"1/4" G		
	30	41	50	62	30	18	BC 30 S	R 1" G		
	38	50	60	72	39	22	BC 38 S	R 1"1/2" G		

RACCORDI ORIENTABILI A PASSAGGIO LIBERO



FILETTO Gas cilindrico UNI 338



Serie	Diam. Tubo D	Codice	Diam.F	C2	C1	C3	A	L	G	N	H	M
L Leggera PN 250	8	Z 08 L	R 1/4" G	17	19	19	9	25	18,5	12,5	12	27
	10	Z 10 L	R 1/4" G	19	19	19	9	27	18,5	13,5	13	28
	12	Z 12 L	R 3/8" G	22	22	22	9	32	21,5	15	15	30
	15	Z 15 L	R 1/2" G	27	27	27	9	37	26,5	18,5	17	34
	18	Z 18 L	R 1/2" G	32	27	30	10	45	27	19,5	21	36
	22	Z 22 L	R 3/4" G	36	32	36	12	49	32	24,5	23	41
	22	Z 22 L	R 1/2" G									
	28	Z 28 L	R 1" G	41	41	46	18	58,5	39	29,5	29	46

Serie	Diam. tubo D	Codice	Diam.F	C2	C1	M	N	A	L	Diam.G	H	C3
S PEANTE PN400	6	Z 06 S	R 1/4" G	22	17	31	16	12	30	18	15,2	8
	8	Z 08 S	R 1/4" G	22	19	31	16	12	30	19	15,2	8
	10	Z 10 S	R 3/8" G	27	22	34,5	18	12	35,5	22	17,7	10
	12	Z 12 S	R 3/8" G	30	24	36	19,5	11,5	38,5	23	19,2	12
	14	Z 14 S	R 1/2" G	32	27	40	22	14	41,5	23	20,7	12
	16	Z 16 S	R 1/2" G	36	30	42	23,5	14	45	27	22,2	14
	20	Z 20 S	R 3/4" G	45	36	50	28,5	16	56	32	27,7	17
25	Z 25 S	R 1" G	50	46	55	31	18	62	39	30,7	22	



FILETTO Metrico Cilindrico UNI 4535

Serie	Diam tubo	Codice	Diam. F	C2	C1	C3	A	L	G	N	H	M
Leggera	12	ZM 12 L	M 16X1,5	22	22	22	9	32	21,5	15	15	30